

DAVID SELLERS

THE PENNSYLVANIA STATE UNIVERSITY
COLLEGE OF ARTS AND ARCHITECTURE

ARCHITECTURAL DESIGN STUDIO
ARCHITECTURE 232

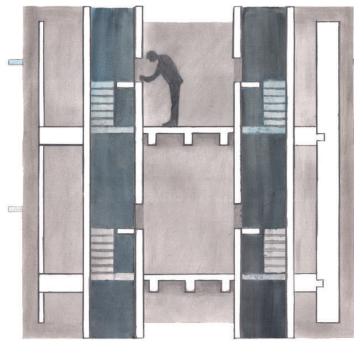
2013

WORKS

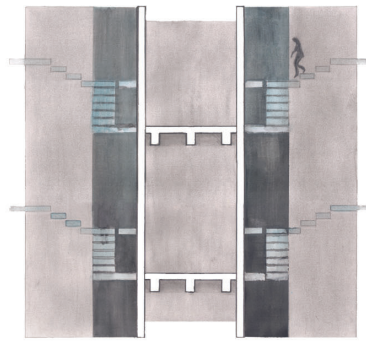
- 04 EAST HALLS DORM ROOM
- 06 CAT FURNITURE
- 08 DELTA PROGRAM PERGOLA
- 10 ENOTECA
- 13 WINE WALL
- 14 HOUSE FOR A MUSICIAN
- 17 BUILDING SECTION
- 18 BROOKLYN BRIDGE MUSEUM

EAST HALLS DORM ROOM

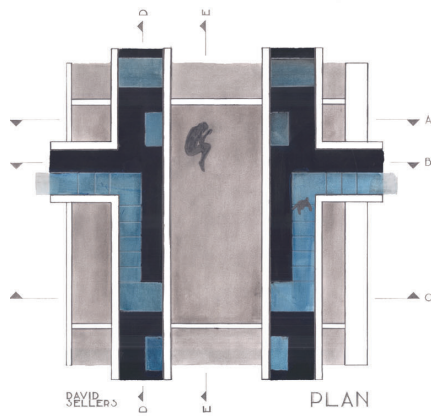
PROFESSOR JODI LA COE | ARCHITECTURAL DESIGN STUDIO: ARCH 131 | FIRST SEMESTER: FALL 2011 | OCTOBER 2011 - DECEMBER 2011



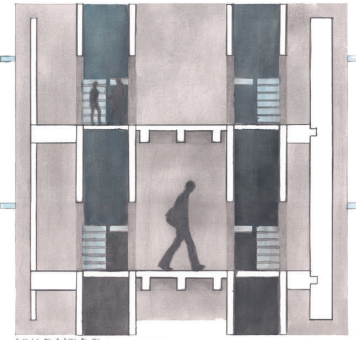
SECTION A



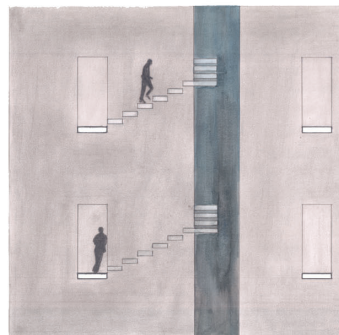
SECTION B



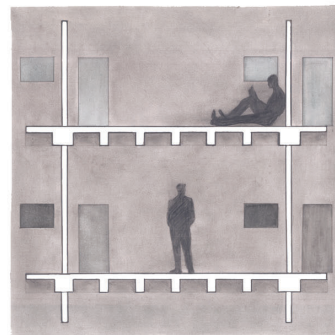
PLAN



SECTION C

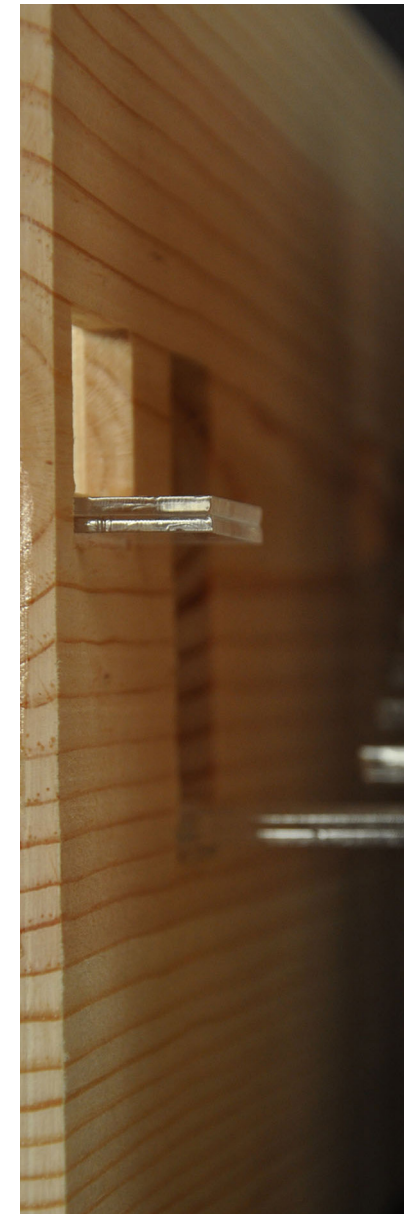


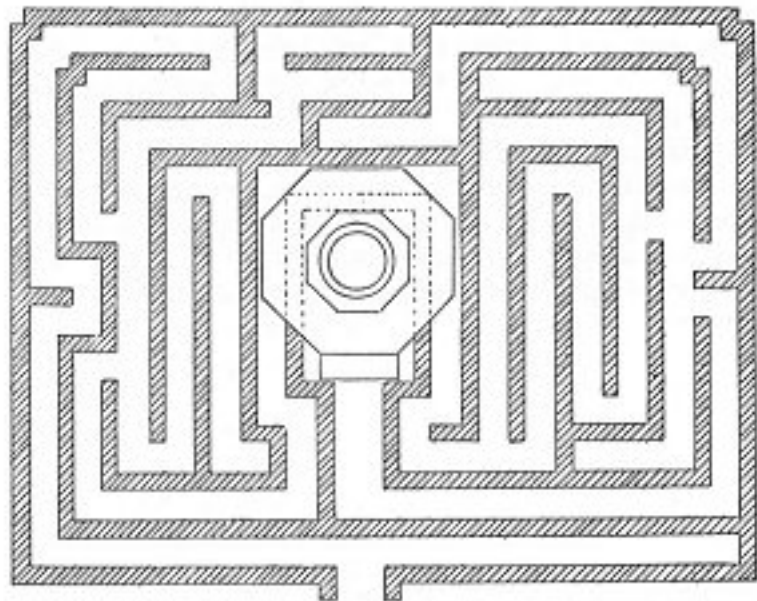
SECTION D



SECTION E

THE EAST HALLS DORM ROOM PROJECT INCORPORATED A LABYRINTH AS THE INITIAL DESIGN INSPIRATION. ONCE THE LABYRINTH WAS ESTABLISHED A DESIGN WAS BUILT AROUND THE DAILY LIFE OF A FRESH-MAN AT PENN STATE AND THE HISTORY OF THE LABYRINTH.



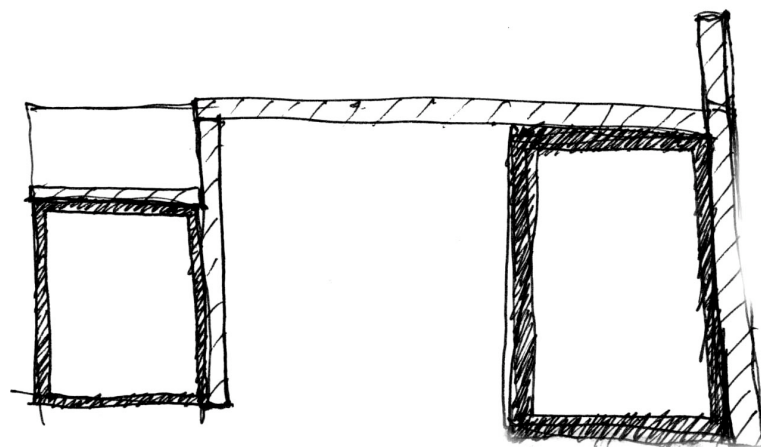
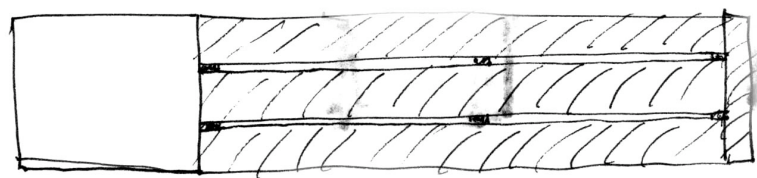


CAT FURNITURE

PROFESSOR REBECCA HENN | ARCHITECTURAL DESIGN STUDIO: ARCH 131 | SECOND SEMESTER: SPRING 2012 | JANUARY 2012 - MARCH 2012

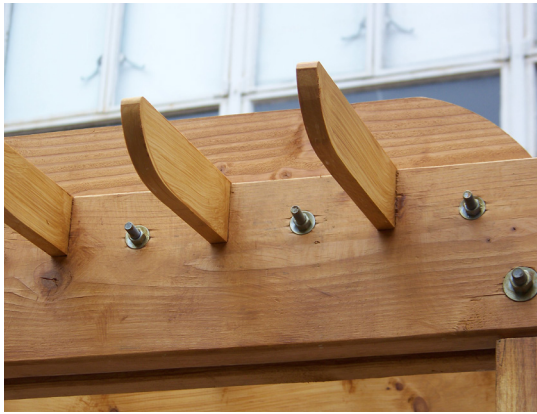


THE FURNITURE PROJECT PROMPT WAS TO DESIGN A PIECE OF FURNITURE FOR DAILY USE BY A HUMAN AND ALSO BY A HOUSECAT. THE PROJECT IS A THREE PIECE DESK SET, CONTAINING DIFFERING SIZED SHELVES, PAPER STORAGE, AND A HEATED PILLOW. THE PROJECT WAS COMPLETED USING 99% RECYCLED MATERIALS BY WEIGHT.



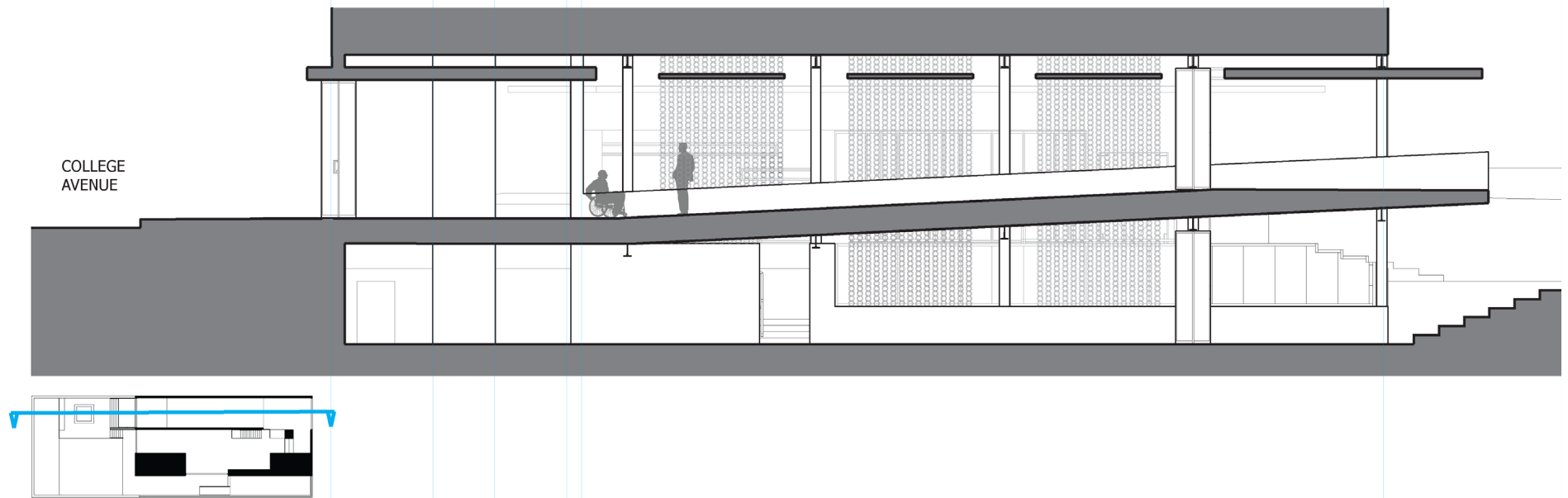
DELTA PROGRAM PERGOLA

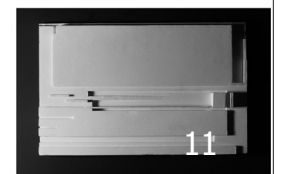
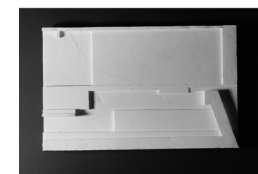
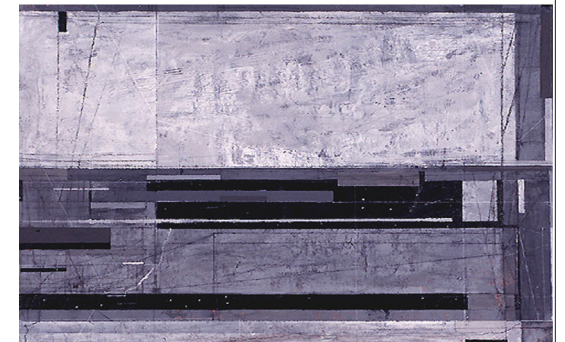
PROFESSOR DANIELLE RIVERA | ARCHITECTURAL DESIGN STUDIO: ARCH 132 | SECOND SEMESTER: SPRING 2012 | MARCH 2012 - JUNE 2012



THE DELTA PROGRAM PROJECT WAS A DESIGN-BUILD PROJECT. THE DELTA PROGRAM - THE ALTERNATIVE SCHOOL FOR HIGH SCHOOL STUDENTS IN THE STATE COLLEGE, PENNSYLVANIA, SCHOOL DISTRICT - REQUESTED A SUN SHADE STRUCTURE AND GREEN SPACE IN THEIR EXISTING PATIO. THE PERGOLA USED RECYCLED LUMBER AS THE COLUMNS AND PINE FOR THE REMAINDER.





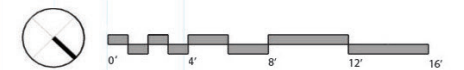
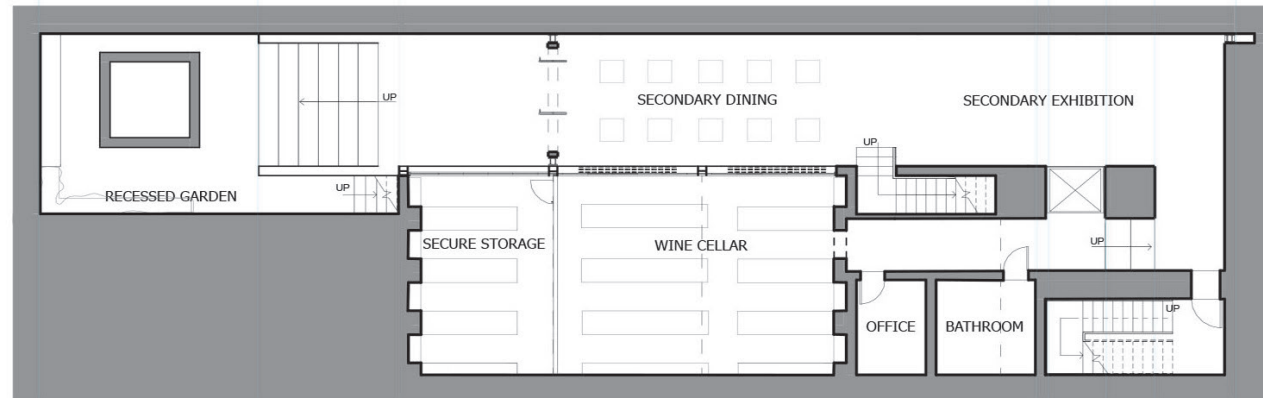
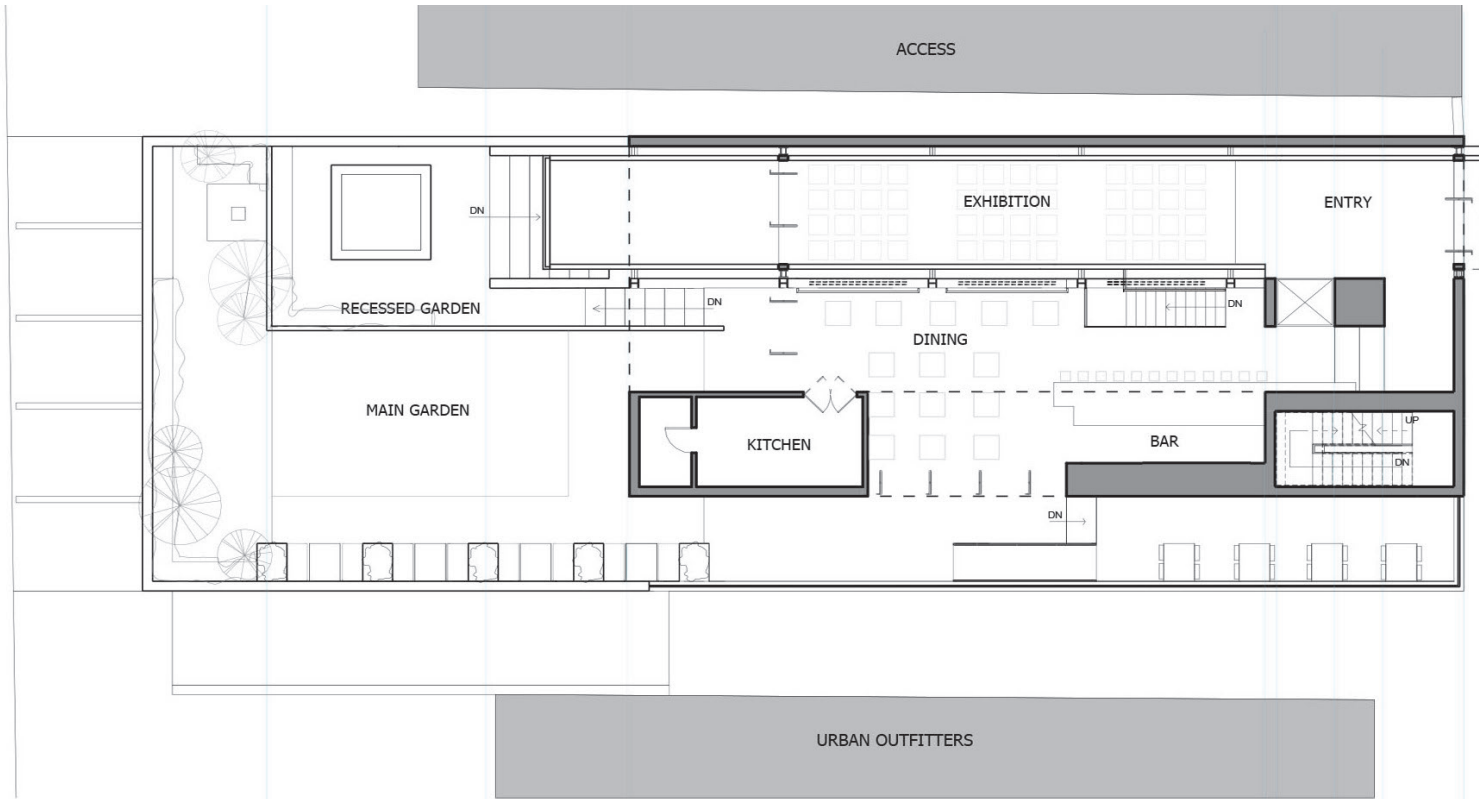


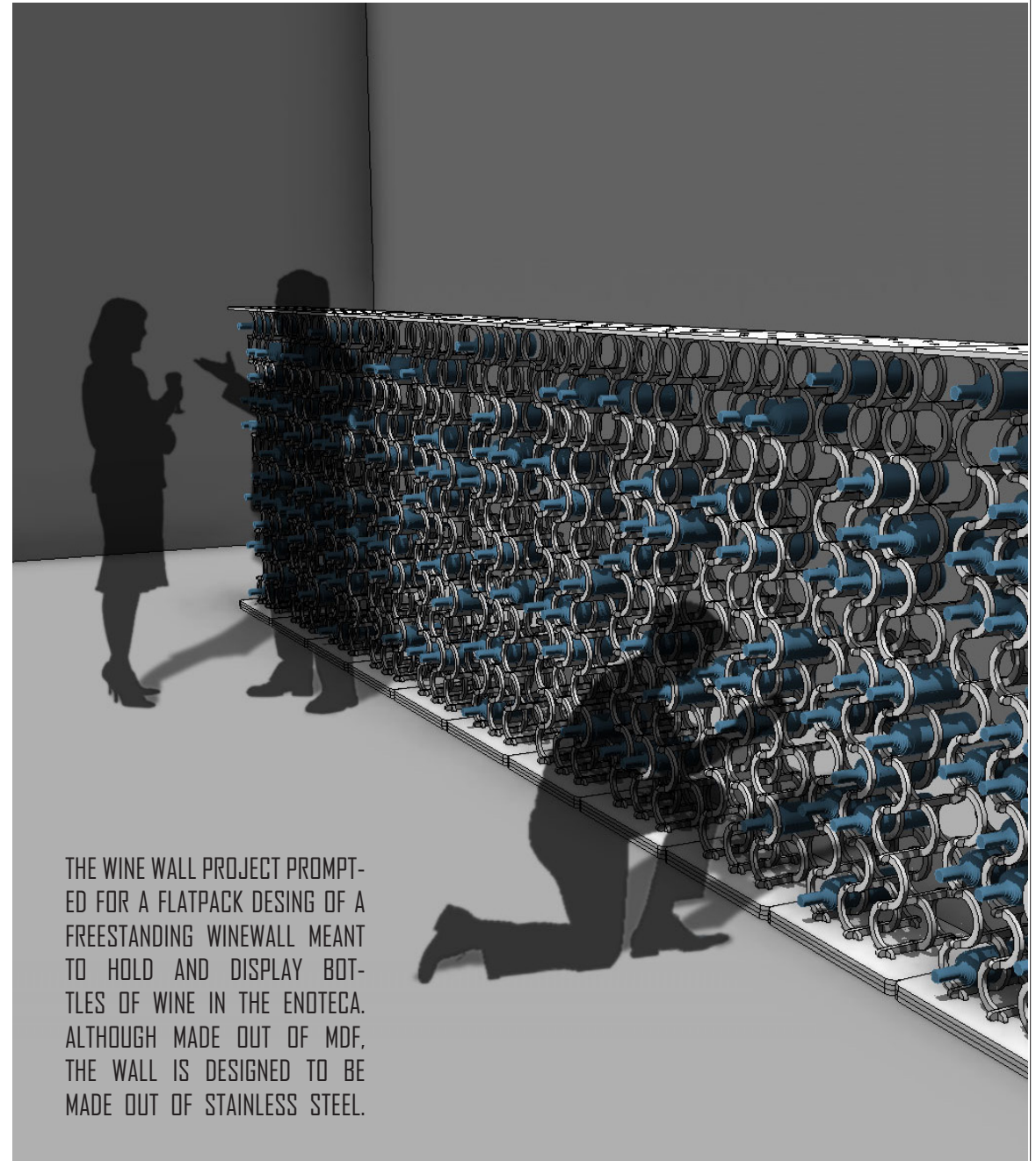
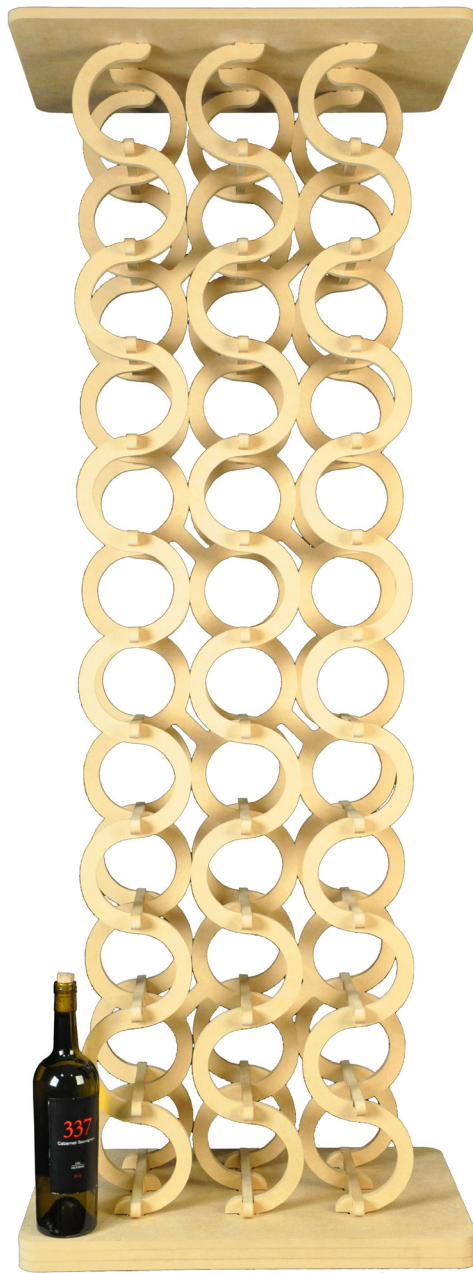
THE ENOTECA PROJECT WAS A RENOVATION OF THE INTERIOR OF AN EXISTING BUILDING IN DOWNTOWN STATE COLLEGE, PENNSYLVANIA. THIS PROJECT REQUIRED FOR DINING AND GARDEN SPACES, AS WELL AS AN INTEGRATIVE EXHIBIT SPACE FOR ART AND FOR THE DISPLAY OF VARIOUS WINES. THE RENOVATION WAS INSPIRED BY *deepSURFACE_8* BY JEFFREY HILDER.



CALDER WAY

COLLEGE AVENUE

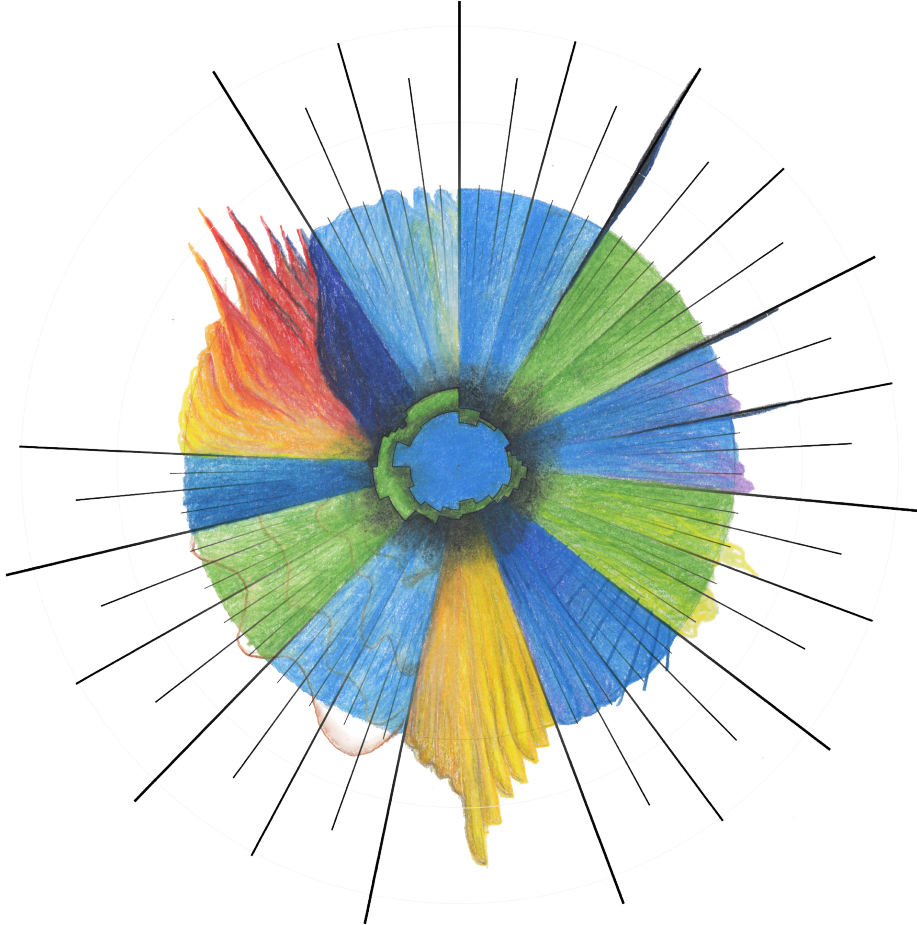




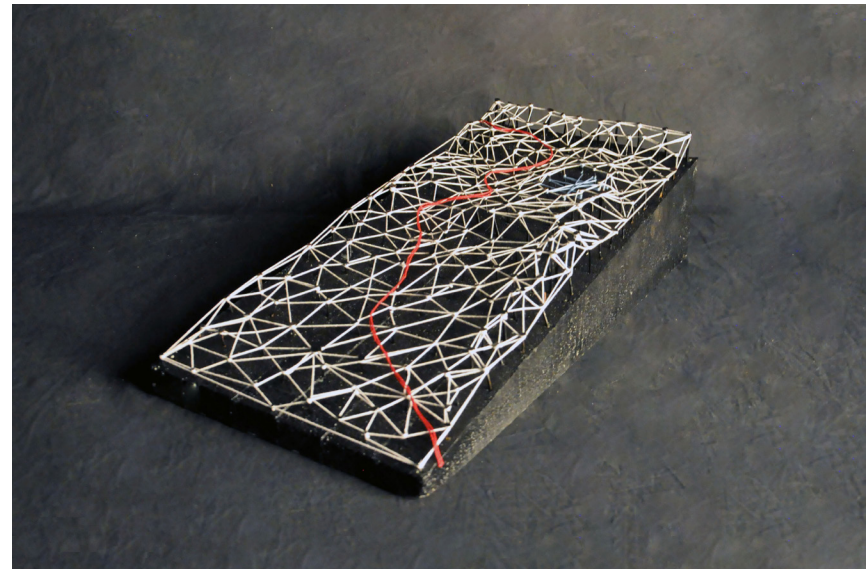
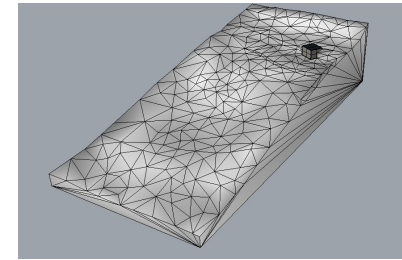
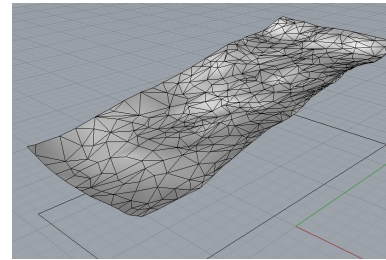
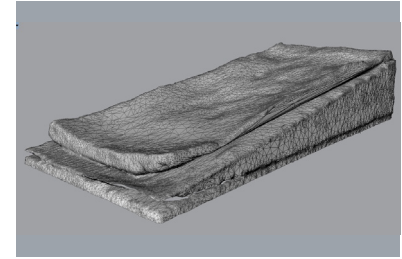
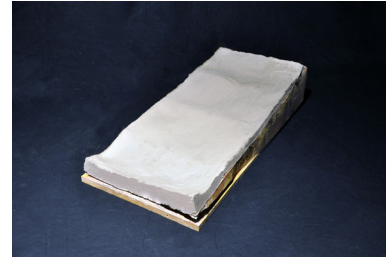
THE WINE WALL PROJECT PROMPTED FOR A FLATPACK DESIGN OF A FREESTANDING WINEWALL MEANT TO HOLD AND DISPLAY BOTTLES OF WINE IN THE ENOTECA. ALTHOUGH MADE OUT OF MDF, THE WALL IS DESIGNED TO BE MADE OUT OF STAINLESS STEEL.

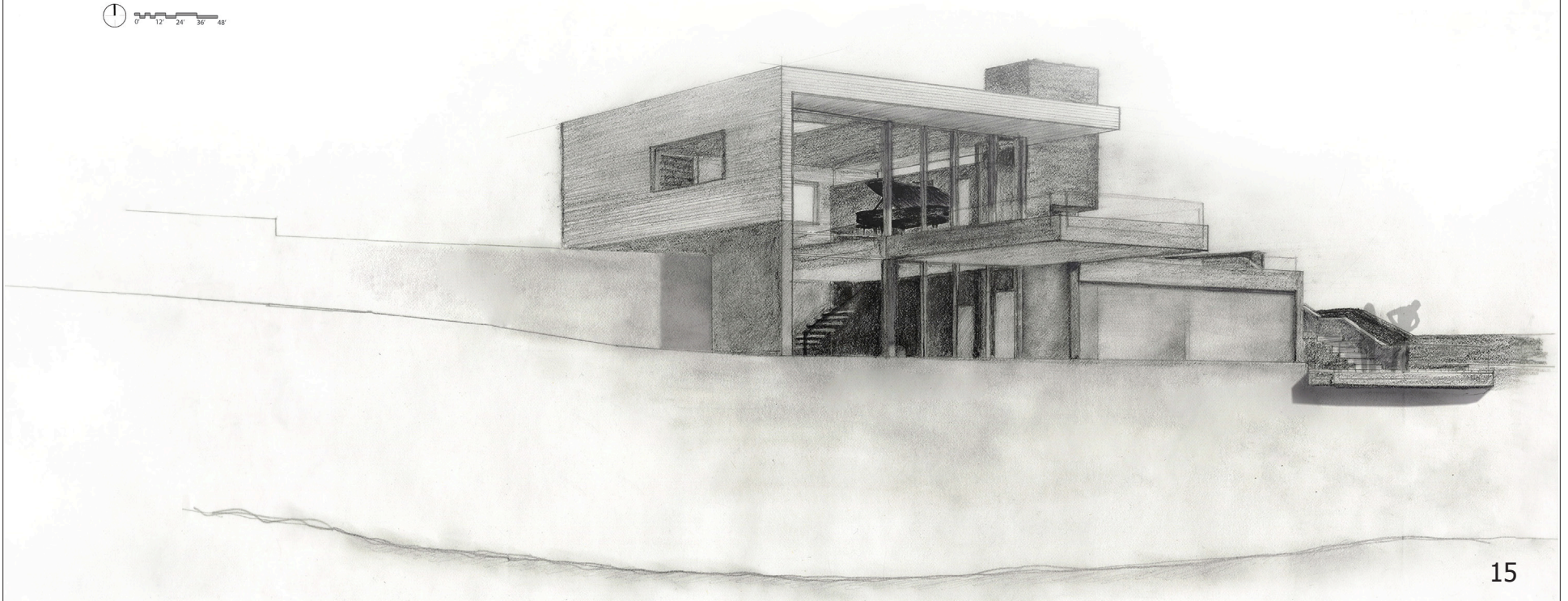
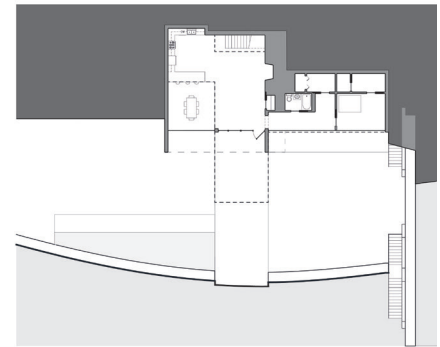
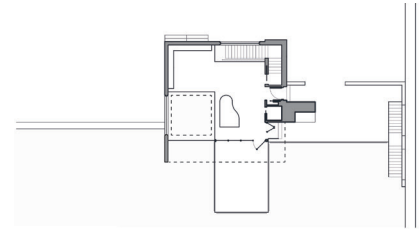
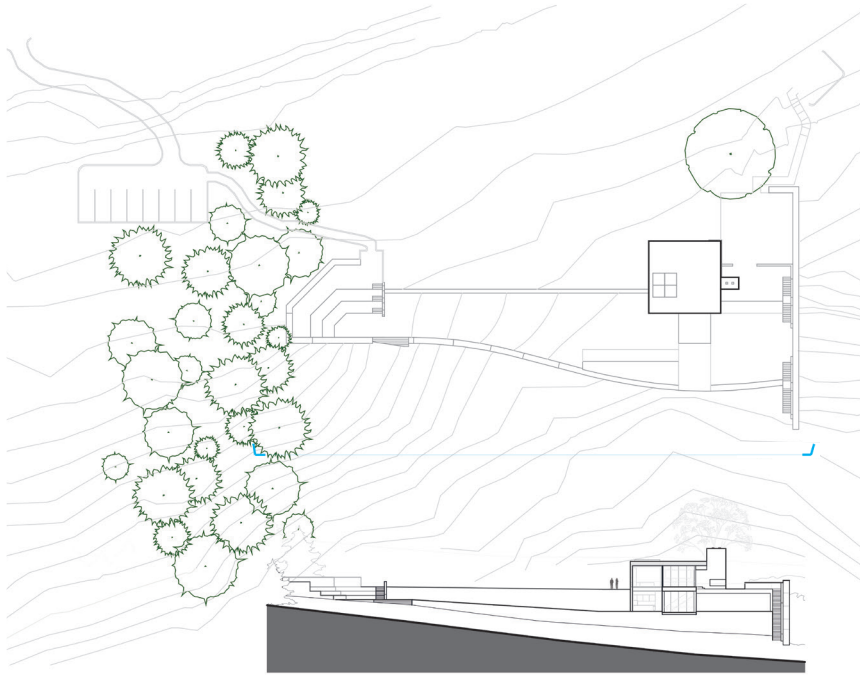
HOUSE FOR A MUSICIAN

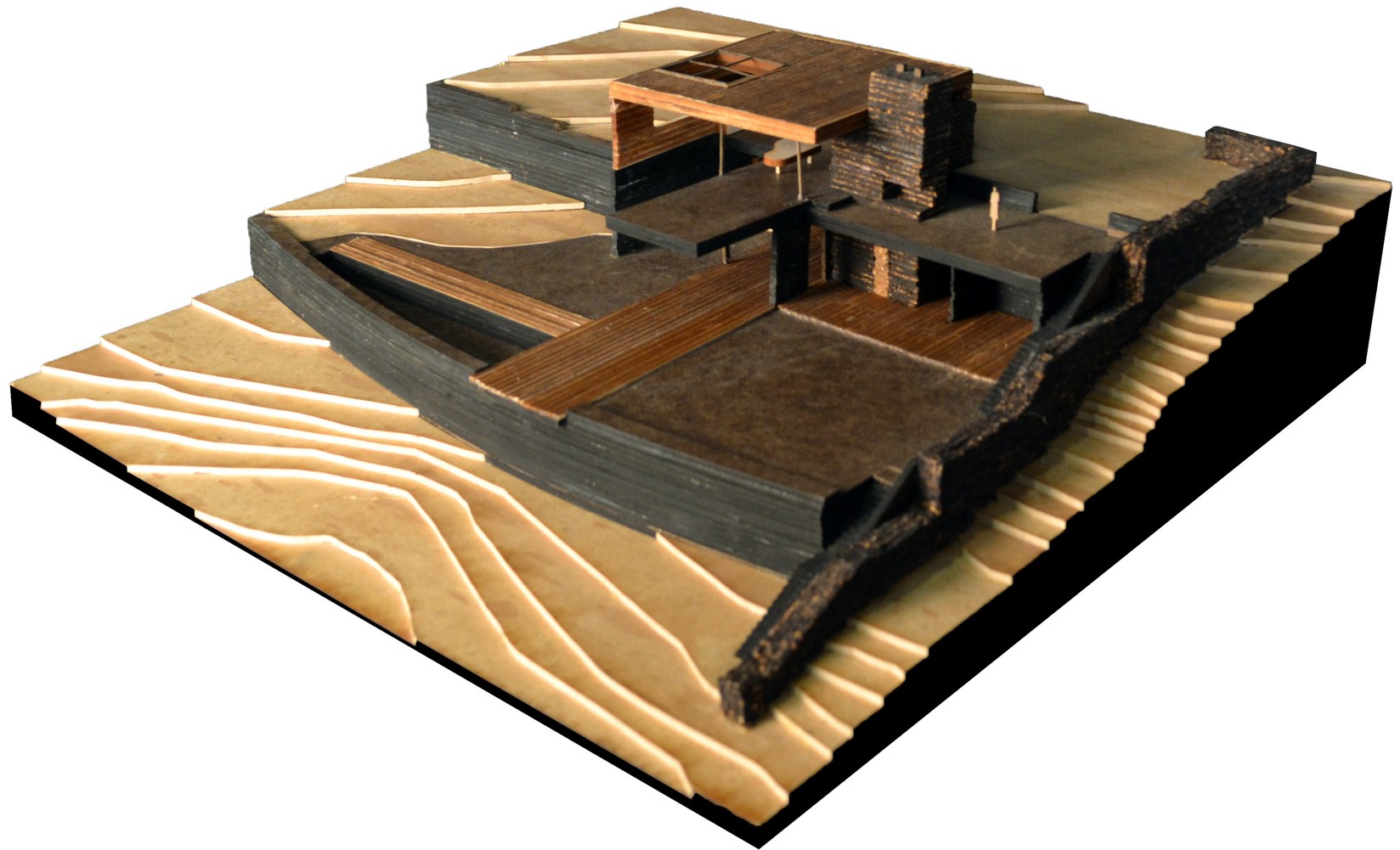
PROFESSOR JAMIE COOPER | ARCHITECTURAL DESIGN STUDIO: ARCH 231 | THIRD SEMESTER: FALL 2012 | OCTOBER 2012 - DECEMBER 2012

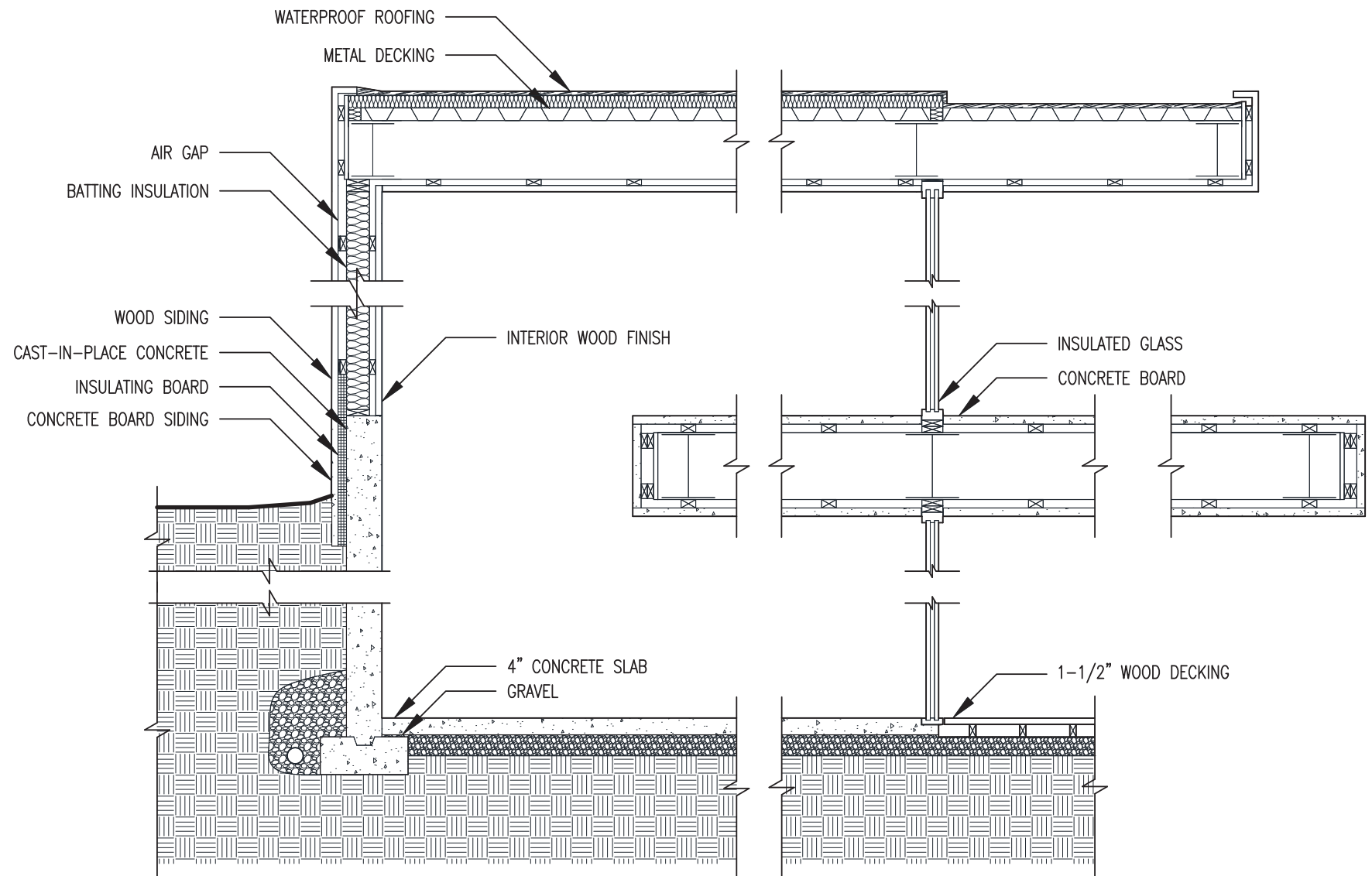


THIS PROJECT CALLED FOR A HOUSE TO BE DESIGNED FOR A SINGLE MUSICIAN. THE SITE WAS DESIGNATED AS BALD EAGLE STATE PARK, ABOVE THE LAKE. THE HOUSE WAS INSPIRED BY HAYDN'S SYMPHONY NO. 94 - 2nd MOVEMENT (SEEN MAPPED ABOVE) AS WELL AS THE CONTOURS OF THE HILL.



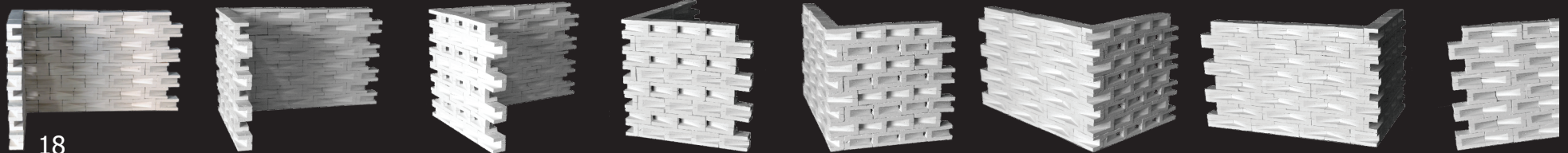
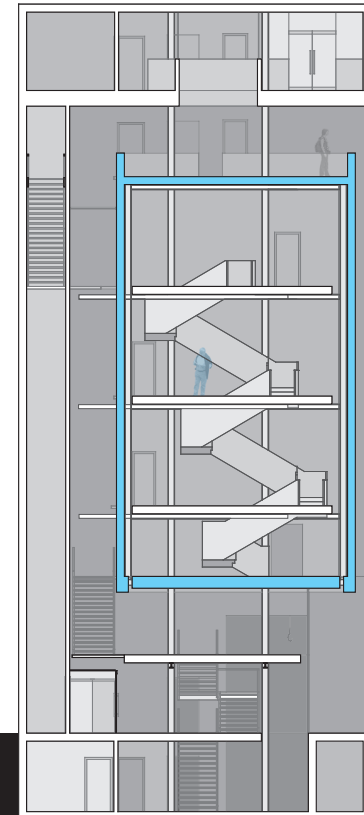
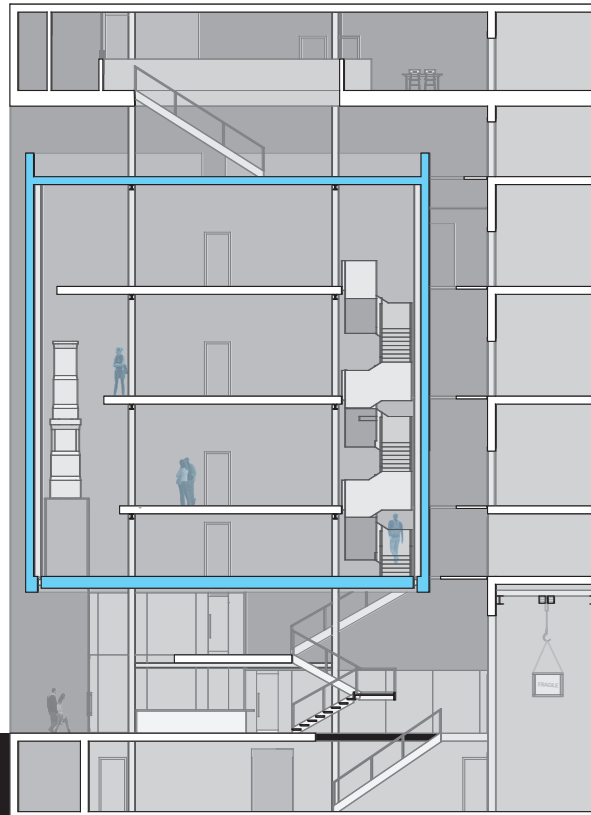
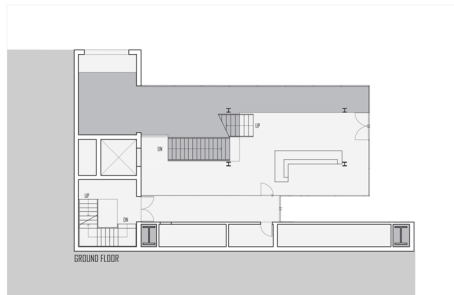
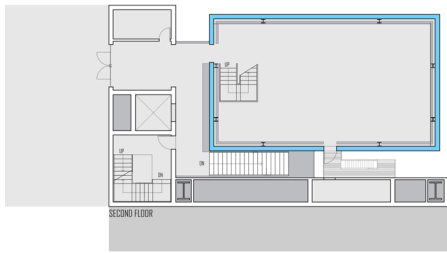






1

WALL SECTION



THIS PROJECT CALLED FOR A MUSEUM TO BE DESIGNED WITH BRIDGES AS THE FOCAL POINT - SPECIFICALLY THE BROOKLYN BRIDGE IN NEW YORK CITY, NEW YORK. THE PROJECT WAS DESIGNED AS A COMPETITION BOARD FOR THE NATIONAL CONCRETE MASONRY ASSOCIATION COMPETITION. THE CUSTOM CONCRETE MASONRY UNITS WERE DEVELOPED TO FURTHER ENHANCE THE EMOTION OF THE MUSEUM.

